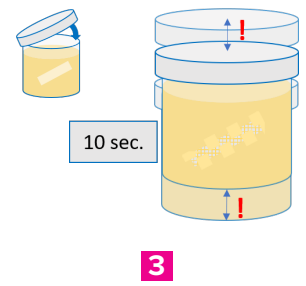
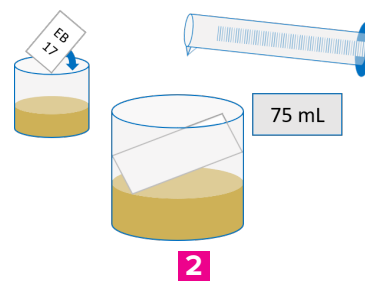
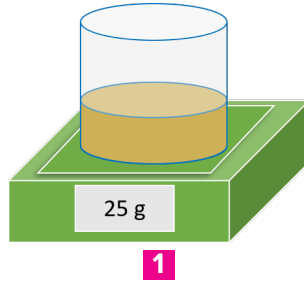
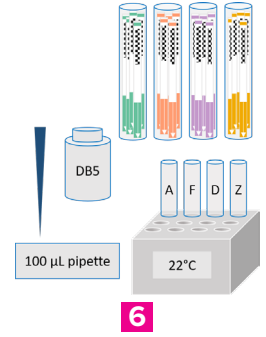
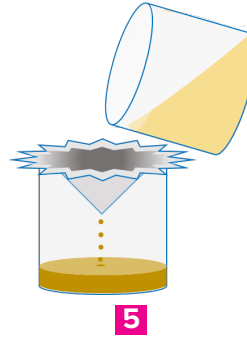
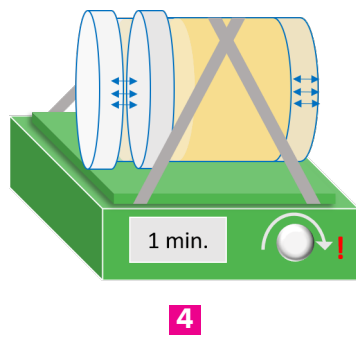


- 1 Grind sample and weigh out 25g
- 2 Add EB17 pouch and 75 mL water
- 3 Cap, and shake vigorously to dissolve pouch

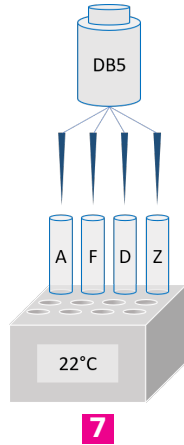


- 4 Place sample on a mechanical shaker on high for 1 minute
- 5 Filter the extract

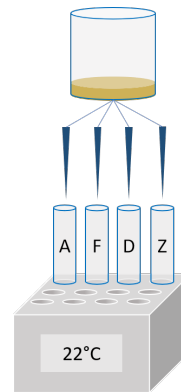


- 6 Lay out items to run assay: DB5 buffer, strips, tubes, incubator, pipettes, and tips

- 7 Add 100 µL DB5 Buffer to each tube



- 8 Add 100 µL Sample Extract to each tube; stir each tube well to mix Buffer and Extract

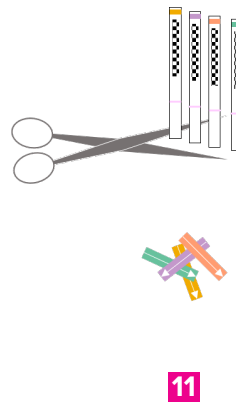
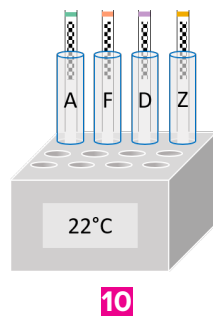


- 9 Add strips to tubes for testing



- 10 Set timer for 4 minutes

- 11 Remove strips immediately after 4 minutes and cut off the arrow tape "tail pads"



- 12 Insert strips into carrier and press Read Test in the QuickScan main menu

